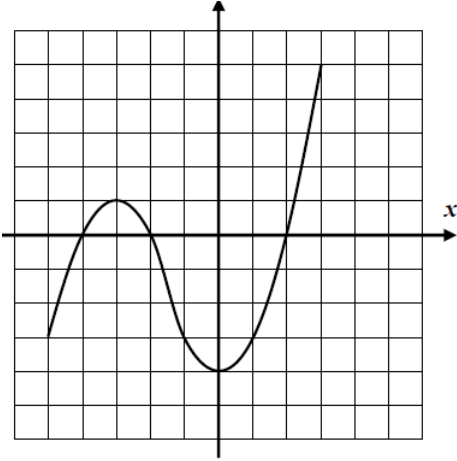


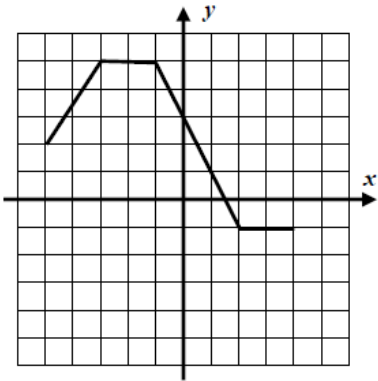
Name: _____
Date: _____
Class: _____

Algebra
Unit 4
HW 4-6

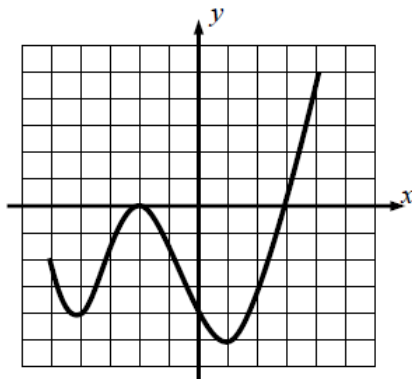
1) What is the domain of the function pictured below?



2) What is the range of the function g below?



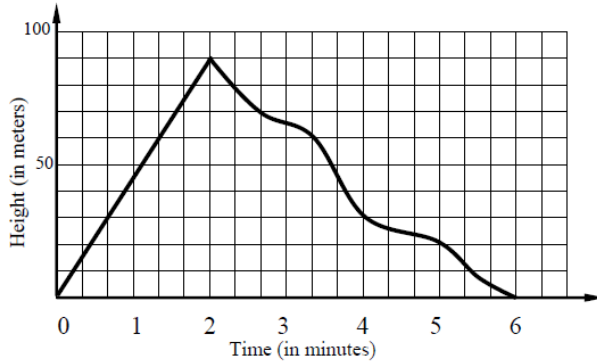
3) What are the local minimums for this function? Is there an absolute minimum?



4) Use a graph to determine the domain and range of the following piecewise function

$$f(x) = \begin{cases} 2 - 3x & -1 \leq x \leq 1 \\ x - 2 & 1 < x \leq 3 \end{cases}$$

5) The following function graph shows Jim's height above the ground for a period of time while skiing. Answer the following questions about this function.

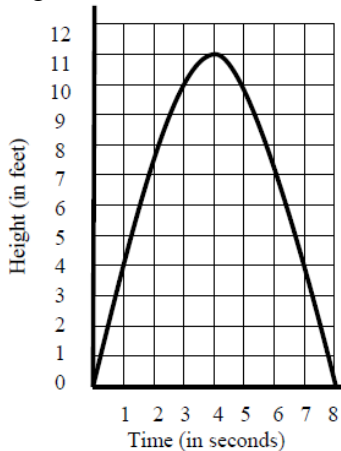


a) What is the range of the function

b) What is a possibly happening between $t = 0$ and $t = 2$?

c) How long do you feel it took Jim to ski down the slope?

6) The function below shows the height of a ball off the ground. Approximately how long was the ball 8 feet off the ground?



7) If $f(x) = -x^2 - 3x + 7$ which is larger? $f(-2)$ or $f(1)$?