

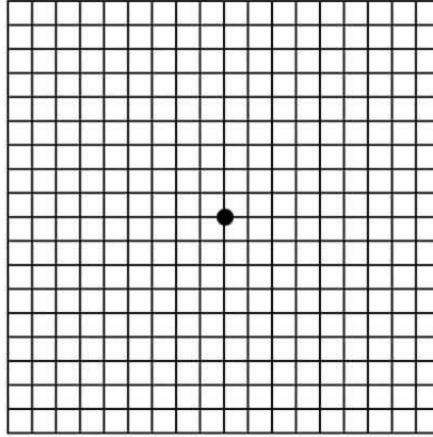
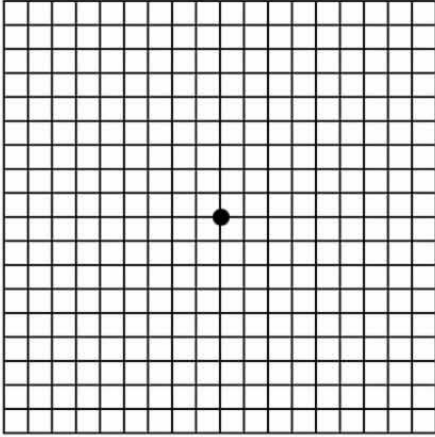
Name: _____
Date: _____
Class: _____

Geometry
Unit 1
HW 1-3

1) Draw a line through the point with the given slope:

a) $(-2, 4)$ and $m = \frac{5}{4}$

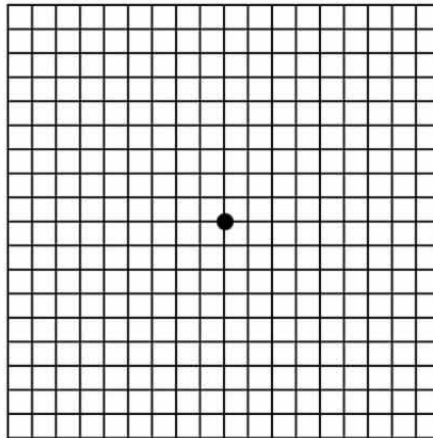
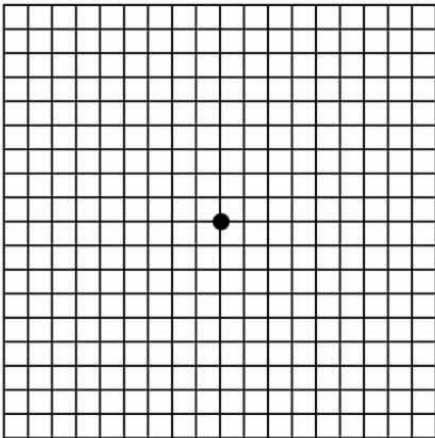
b) $(-4, 7)$ and $m = -2$



2) Graph the following lines:

a) $3x = 5 - 2y$

b) $-2x + 4y = 12$

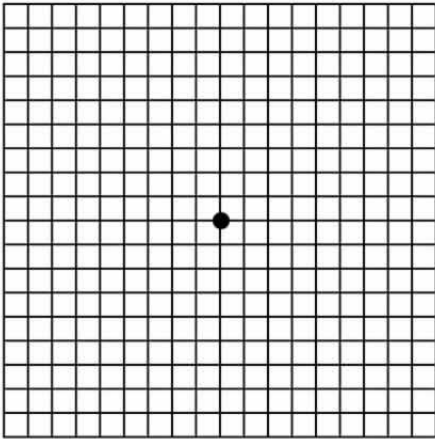


3) Are the following lines \parallel , \perp , or neither? (state why)

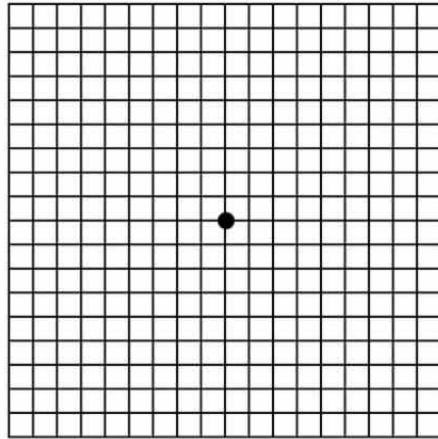
$y - 4 = -2x$

$2y + 4 = x$

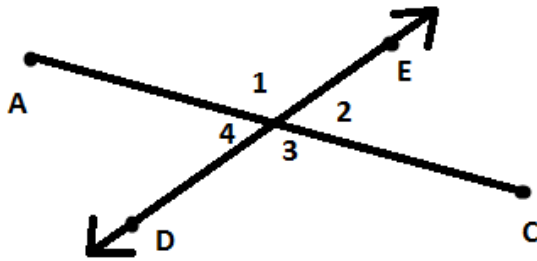
- 4) Write the equation of a line:
 a) Passing through (1, -2) and (5, 10)



- b) Parallel to $2y + 4 = x$ and passing through (2, 5)



6)



If $m\angle 1 = 5x + 52$ and
 $m\angle 4 = 2x + 30$ find $m\angle 2$

- 7) \overline{XD} has point Q between X and D. If $XQ = x + 3$, $QD = 2x - 15$, and $XD = 4x - 53$, find and explain the value of x.