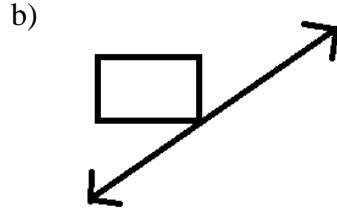
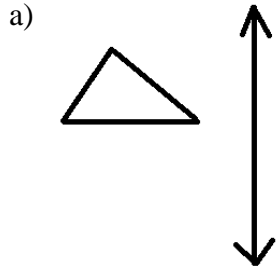


Name: _____
Date: _____
Class: _____

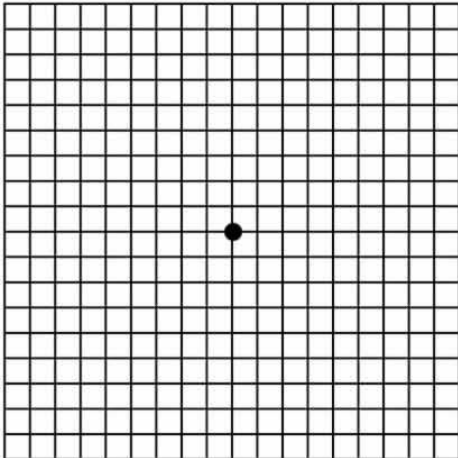
Geometry
Unit 5
HW 5-1

1) Sketch each figure after a reflection of the line:

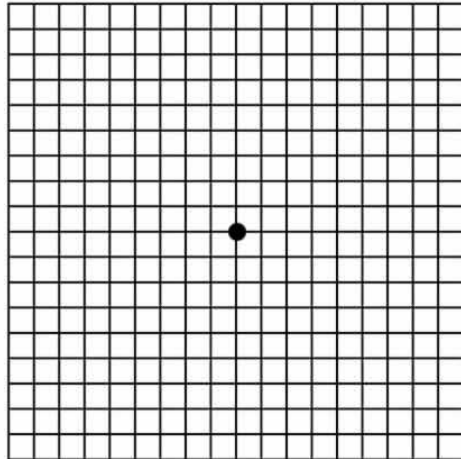


2) For each scenario use $\triangle ABC$ with A (1,1), B (5,1), and C (3,5) and perform the transformation listed:

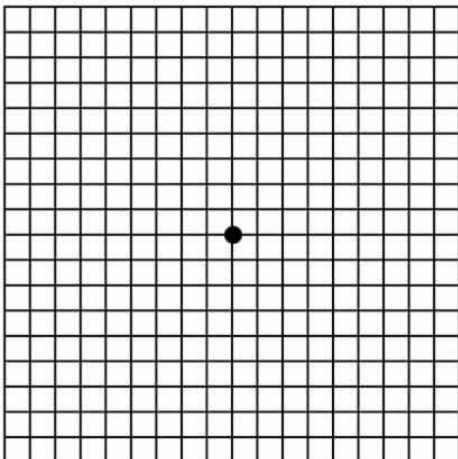
a) Reflect $\triangle ABC$ in the origin



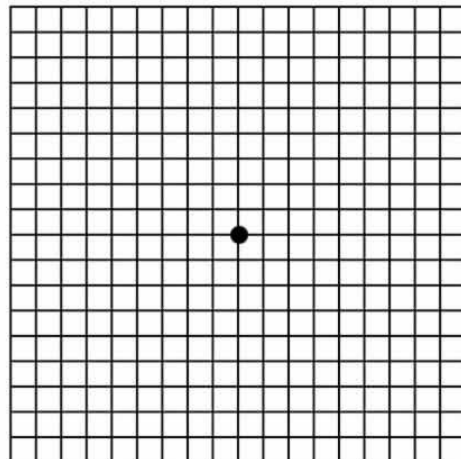
b) Reflect $\triangle ABC$ in the y-axis



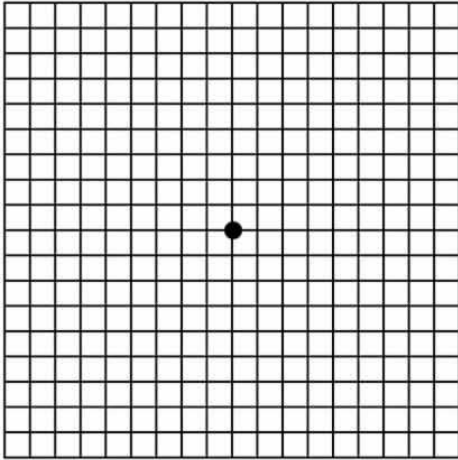
c) Perform $r_{(-1,2)}$ on $\triangle ABC$



d) Perform $r_{y=2}$ on $\triangle ABC$



- 3) Graph the preimage and image of the figure using the transformation $T_{-2,4}$
 $\triangle KDB$ with $K(-1,4)$, $D(0,6)$, and $M(2,2)$



- 4) If a triangle is translated using $(x + 5, y - 2)$ and then reflected over the x-axis. What is true about the angles of the triangle?

- 5) Find the image of triangle ABC using $A(-2, 5)$, $B(5, 4)$, and $C(2, -3)$ using $T_{(1,1)}$.

- 6) Find the image of $\triangle A'B'C'$ from #5 using $T_{5,6}$