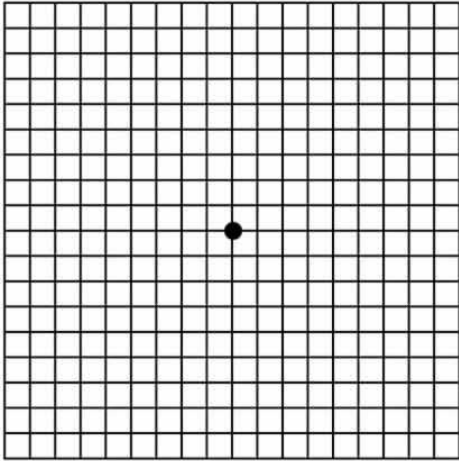


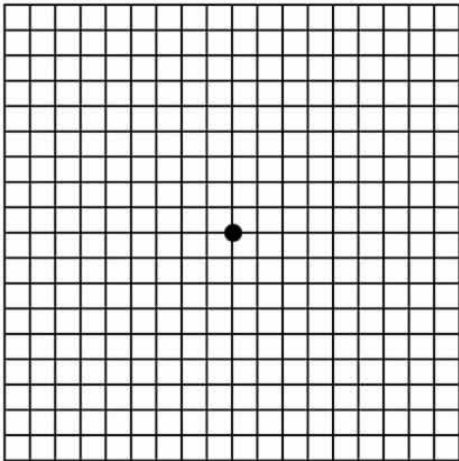
Name: _____
Date: _____
Class: _____

Geometry
Unit 5
HW 5-2

1) Reflect $\triangle BCD$ over the line $y = x$ if $B(5, 0)$, $C(-2, 4)$ and $D(-2, -1)$



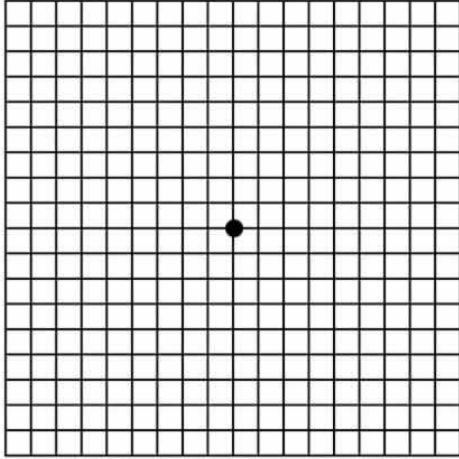
2) Reflect $\triangle BCD$ in #1 over the line $y = -x$



3) If a dilation as a S.F. = $\frac{1}{2}$ how long would the image of \overline{PQ} be if $PQ = 10$.

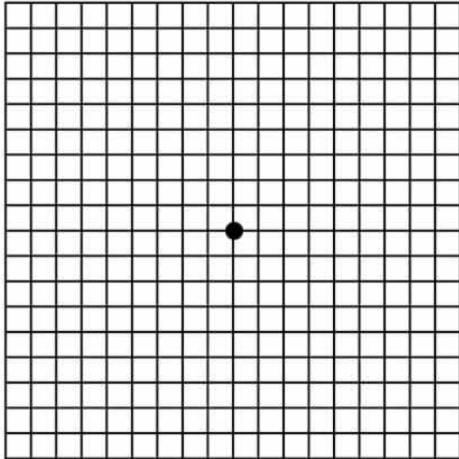
4) How long would the pre-image of a segment be that is 14 inches long be if the S.F. was 2?

5) Graph $\triangle PQL$ if $P(0, 0)$, $Q(1, 5)$, and $L(4, -2)$ and its image using D_2 .



6) On the same graph as #5 reflect $\triangle P'Q'L'$ over the x-axis.

7) Graph PQRS with $P(1, 2)$, $Q(3, 3)$, $R(3, 5)$, and $S(1, 4)$ and its image using $D_{\frac{1}{2}}$



8) If a dilation maps $(2, 4)$ to $(5, 10)$ what is the scale factor.

9) If a translation maps $(2, 4)$ to $(5, 10)$ write a notation for this translation and also what would the pre-image of $(9, 12)$ be?