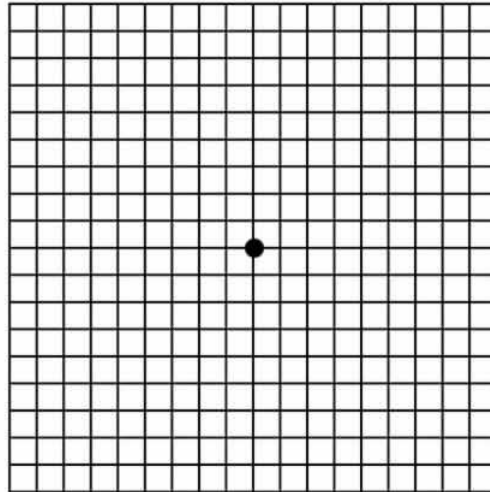


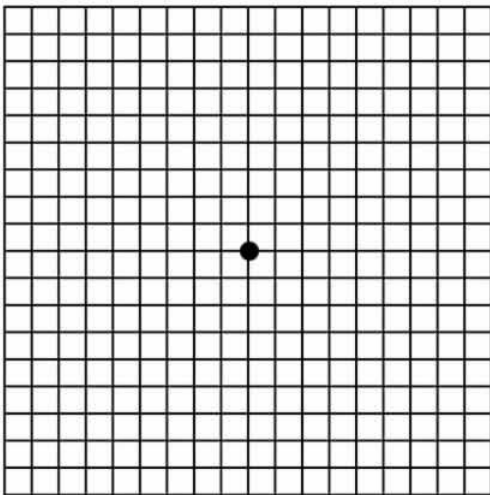
Name: _____
Date: _____
Class: _____

Geometry
Unit 6
HW 6-5

1) If a triangle has the points $(2, 1)$, $(3, 5)$ and $(7, 4)$ what type of triangle is it?

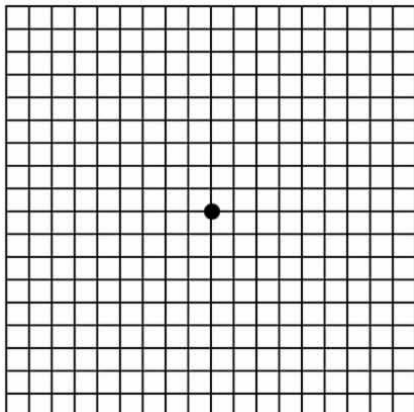


2)



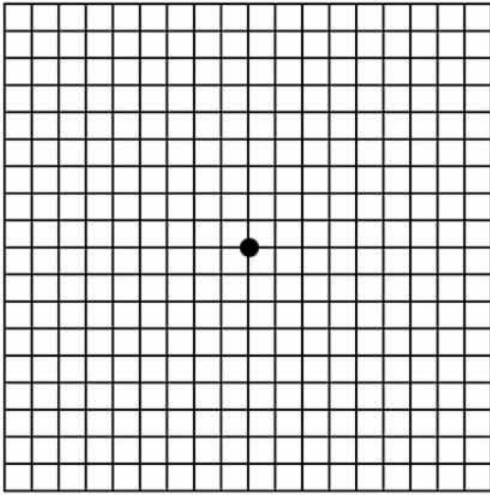
If a quadrilateral has points $(1, 2)$, $(4, 0)$, $(6, 3)$, and $(3, -3)$ what type of quadrilateral is it?

3)



If a trapezoid has 3 points $(1,1)$, $(2, 5)$, $(5, 6)$
What could the 4th point be?

4) If a quadrilateral has points $(-3, -1)$, $(-2, 5)$, $(2, 5)$, and $(3, -1)$ what type of quadrilateral must it be?



5) In parallelogram $UIOP$, $m\angle UIP = 3x - 21$, $m\angle PIO = x + 13$, and $m\angle OPI = 2x - 6$, find $m\angle PUI$.

6) In rhombus $QWER$ the diagonals intersect at A . If $QA = 3x - 10$, $WA = x + 5$, and $EA = 2x - 1$, find the perimeter of the rhombus.